

# LP 3000

## WELDED REPHASING CYLINDER SERIES

3000 PSI SEAL KIT

PROVEN WELDED DESIGN

CHECK BALL REPHASING PORT

12 MONTH LIMITED WARRANTY



TOLL-FREE: 1-800-665-0247

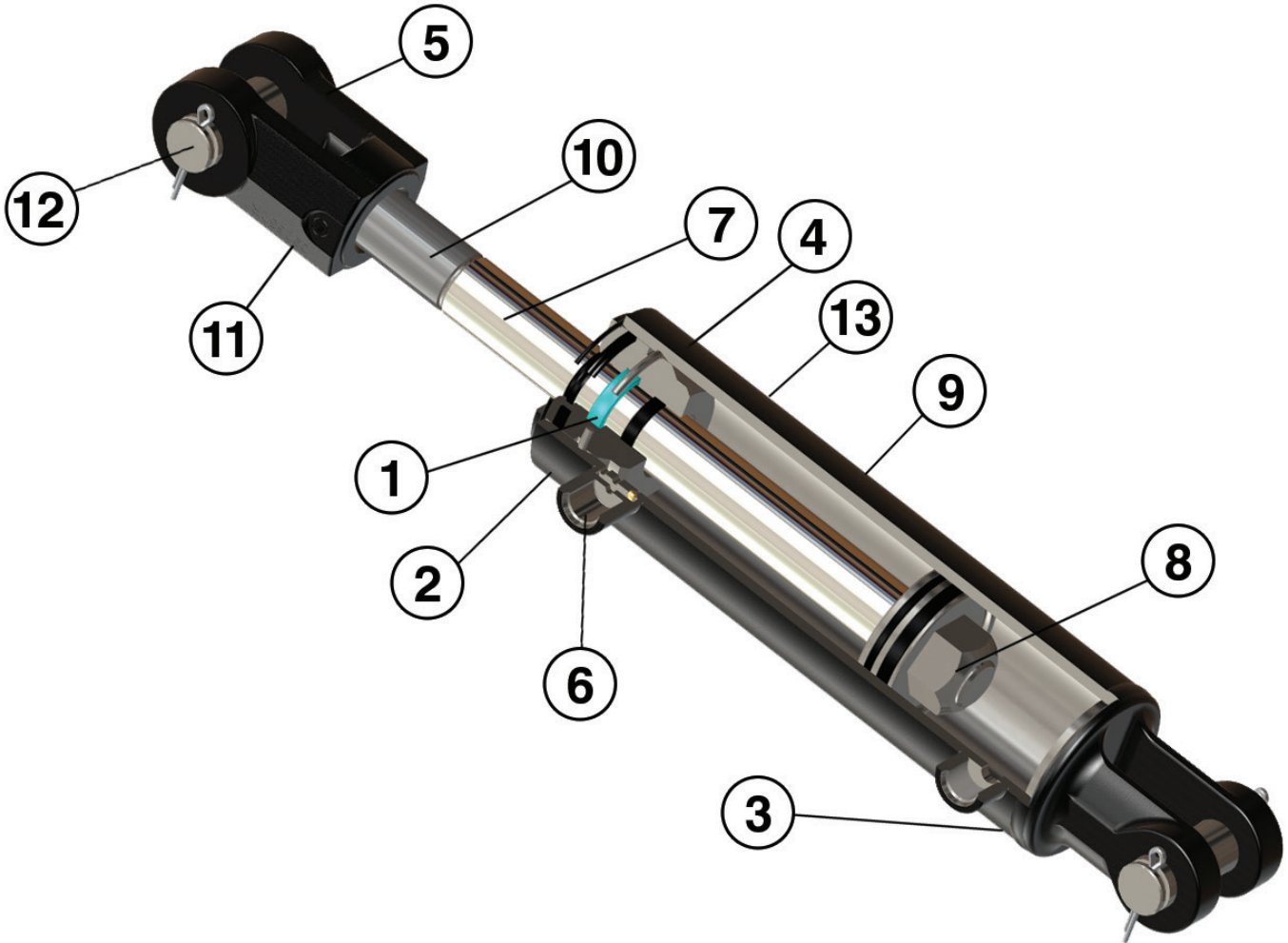
EMAIL: [ORDERS@MONARCHINDUSTRIES.COM](mailto:ORDERS@MONARCHINDUSTRIES.COM)

[WWW.LIONHYDRAULICS.COM](http://WWW.LIONHYDRAULICS.COM)



### VALUE ENGINEERED HYDRAULIC SOLUTIONS

THE LYNX LP3000 WELDED REPHASING CYLINDER SERIES INCORPORATES OVER 50 YEARS OF HYDRAULIC CYLINDER DESIGN EXPERIENCE INTO EVERY CYLINDER. WITH 3000 PSI WORKING PRESSURE AND 6000 PSI PROOF PRESSURE, THE LP3000 LINE OFFERS THE LATEST IN SEALING AND REPHASING TECHNOLOGY, PERFECT FOR TODAY'S DEMANDING HIGH PRESSURE APPLICATIONS.



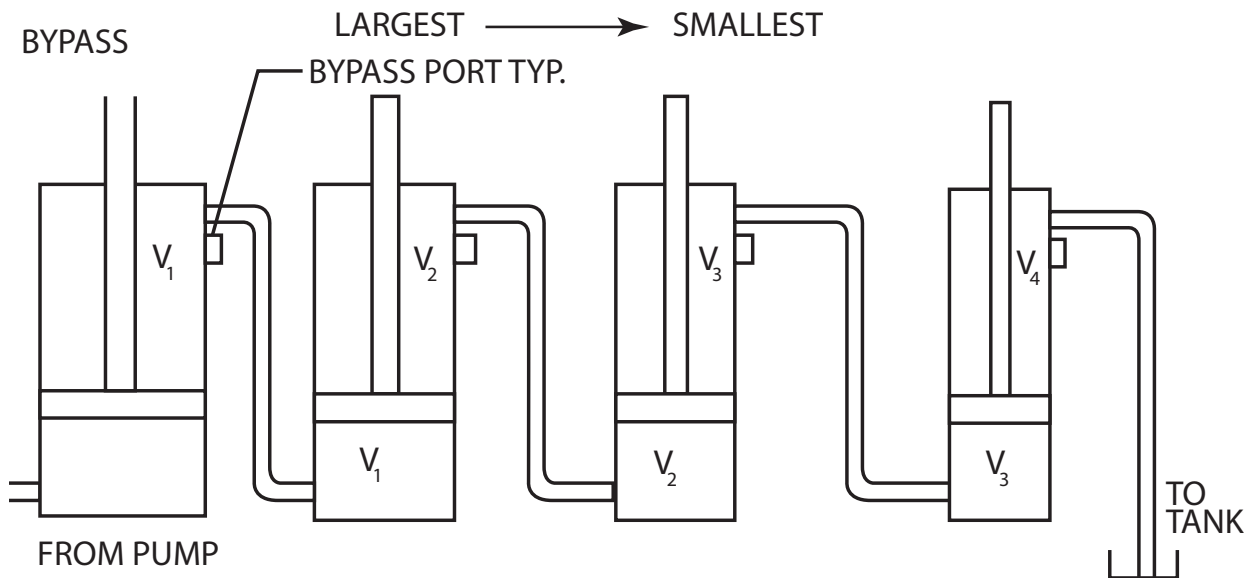
- |  |   |
|--|---|
| <p><b>1</b> 3000 PSI seal kits for extended service and leak free performance under the most demanding applications.</p> <p><b>2</b> The latest in rephasing technology provides extended cylinder life, simplifies set-up, and provides reliable performance:</p> <ul style="list-style-type: none"> <li>• Check ball rephasing port prevents stalling and provides leak free performance.</li> <li>• Results in reduced set-up times and higher flow rates.</li> </ul> <p><b>3</b> Multi pass welds offer superior leakage control and extended service life.</p> <p><b>4</b> Wire ring head design extends cylinder life and reduces downtime in the field with an easy to service design.</p> <p><b>5</b> ASAE double lug design</p> | <p><b>6</b> Standard 3/4-16 ORB ports provide reliable leak free performance and a simple connection.</p> <p><b>7</b> High strength, hard chrome-plated rod provides extended cylinder life in harsh applications.</p> <p><b>8</b> Heavy-duty, torqued and self-locking piston nut holds piston firmly in position under high-cycle loading.</p> <p><b>9</b> Precision finished skived and burnished steel tubing for extended seal and cylinder life.</p> <p><b>10</b> Threaded shaft to accept optional mechanical stroke control.</p> <p><b>11</b> Heavy duty ductile iron rod clevis</p> <p><b>12</b> High tensile, zinc plated pins and cotter pins retainers</p> <p><b>13</b> High gloss black paint finish</p> |
|--|---|



## AVAILABLE STANDARD CONFIGURATIONS

MODEL	BORE	STROKE	ROD DIA	SHIP WT.	RETRACTED LENGTH	PINS	ALLOWABLE PRESSURE (PSI)	3/4-16 ORB IN LINE ORDER NUMBER (STANDARD STOCKED)
3000 psi 8" Stroke cylinders								
25LP08-112	2.5	8.0	1.125	15.5	20.25	1.00	3000	647783
27LP08-112	2.8	8.0	1.125	17.6	20.25	1.00	3000	647784
30LP08-125	3.0	8.0	1.250	23.5	20.25	1.00	3000	647785
32LP08-125	3.3	8.0	1.250	25.6	20.25	1.00	3000	647786
35LP08-125	3.5	8.0	1.250	28.0	20.25	1.00	3000	647787
37LP08-137	3.8	8.0	1.375	30.1	20.25	1.00	3000	647788
40LP08-137	4.0	8.0	1.375	32.0	20.25	1.00	3000	647789
42LP08-150	4.3	8.0	1.500	40.1	20.25	1.00	3000	647790
45LP08-150	4.5	8.0	1.500	42.8	20.25	1.00	3000	647791
47LP08-150	4.8	8.0	1.500	45.5	20.25	1.00	2,500	647792
50LP08-150	5.0	8.0	1.500	54.2	20.25	1.00	2,500	647793

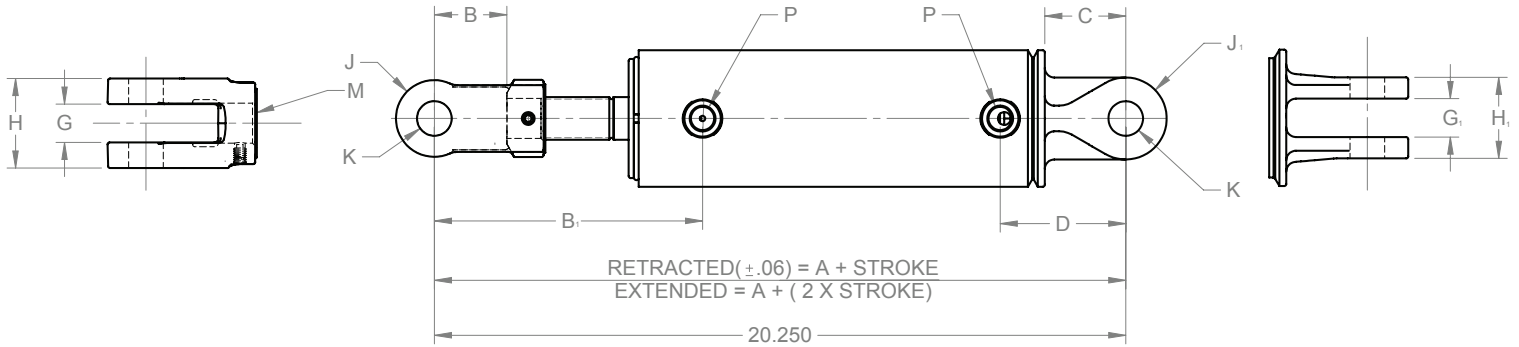
Standard Stocked



## REPHASING CYLINDER SYSTEMS

Synchronized operation of two or more hydraulic cylinders in unbalanced load conditions can be attained by plumbing volumetrically matched cylinders adjacent to each other where the displaced fluid produces, equal, simultaneous, actuation of each cylinder in the system. As the volumes of each cylinder cannot economically, be identically matched, a bypass port is provided that upon full extension (or retraction) a metered amount of fluid bypasses the piston seal to the next adjacent cylinder in the system. This indexes all cylinders of the system to the same position, then upon retraction (extension) positive sealing is engaged and synchronized operation continues (to ensure optimum performance all entrapped air must be purged from these rephasing cylinder systems).

# LP 3000



## DIMENSIONS IN INCHES

BORE	2 1/2"	2 3/4"	3"	3 1/4"	3 1/2"	3 3/4"	4"	4 1/4"	4 1/2"	4 3/4"	5"
<b>A</b>	12 1/4	12 1/4	12 1/4	12 1/4	12 1/4	12 1/4	12 1/4	12 1/4	12 1/4	12 1/4	12 1/4
<b>B</b>	2 1/8	2 1/8	2 1/8	2 1/8	2 1/8	2 1/8	2 1/8	2 1/8	2 1/8	2 1/8	2 1/8
<b>B<sub>1</sub></b>	8 7/16	8 1/8	7 15/16	7 15/16	7 7/8	7 11/16	7 7/8	7 1/2	7 7/16	7 7/16	7 1/2
<b>C</b>	2	2 1/8	2 1/4	2 1/4	2 3/8	2 7/16	2 1/4	2 1/4	2 1/4	2 1/4	2 1/8
<b>D</b>	3 1/4	3 1/2	3 9/16	3 9/16	3 11/16	3 11/16	3 9/16	3 15/16	3 15/16	3 15/16	3 15/16
<b>G</b>	1 1/8	1 1/8	1 1/8	1 1/8	1 1/8	1 1/8	1 1/8	1 3/16	1 3/16	1 3/16	1 3/16
<b>G<sub>1</sub></b>	1 1/8	1 1/8	1 1/8	1 1/8	1 1/8	1 1/8	1 1/8	1 1/8	1 1/8	1 1/4	1 1/4
<b>H</b>	2 1/2	2 1/2	2 5/8	2 5/8	2 5/8	2 1/2	2 5/8	2 15/16	2 15/16	2 15/16	2 15/16
<b>H<sub>1</sub></b>	2 1/8	2 1/8	2 1/8	2 3/8	2 3/8	2 3/8	2 5/8	2 5/8	2 5/8	2 3/4	3 1/4
<b>J</b>	2	2	2 1/4	2 1/4	2 1/4	2	2 1/4	2 5/8	2 5/8	2 5/8	2 5/8
<b>J<sub>1</sub></b>	1 7/8	2 1/8	2 3/16	2 3/16	2 3/8	2 9/16	2 9/16	2 3/4	2 15/16	2 15/16	3 1/16
<b>K</b>	1 1/64	1 1/64	1 1/64	1 1/64	1 1/64	1 1/64	1 1/64	1 1/64	1 1/64	1 1/64	1 1/64
<b>M</b>	1 1/8	1 1/8	1 1/4	1 1/4	1 1/4	1 1/4	1 1/4	1 1/2	1 1/2	1 1/2	1 1/2
<b>P - ORB</b>	3/4 - 16	3/4 - 16	3/4 - 16	3/4 - 16	3/4 - 16	3/4 - 16	3/4 - 16	3/4 - 16	3/4 - 16	3/4 - 16	3/4 - 16

\* Cylinder Column Load - Column strength loading normally affects all types of longer stroke cylinders. Affected cylinders should not be operated beyond these limits as the cylinder rod may buckle or bend causing failure. Stroke limitation applies to compressive loading only. Applications that fall outside the noted parameters, contact LION HYDRAULICS directly for further assistance.

### LION HYDRAULICS IS A DIVISION OF MONARCH INDUSTRIES INC

For placing orders or for further product information contact your local LION HYDRAULICS sales representative, or contact:

**CANADIAN CORPORATE OFFICE: LION HYDRAULICS**  
51 BURMAC ROAD, WINNIPEG, MB R2J 4J3

**PHONE:** 1-204-786-7921 **TOLL FREE:** 1-800-665-0247  
**FAX:** 1-204-889-9120 **FOR ORDERS ONLY FAX:** 1-204-772-9496  
**EMAIL:** orders@monarchindustries.com

**WEBSITE:** [www.lionhydraulics.com](http://www.lionhydraulics.com)

### VALUE ENGINEERED HYDRAULICS SOLUTIONS

Printed in Canada  
233085 R1 05/19

